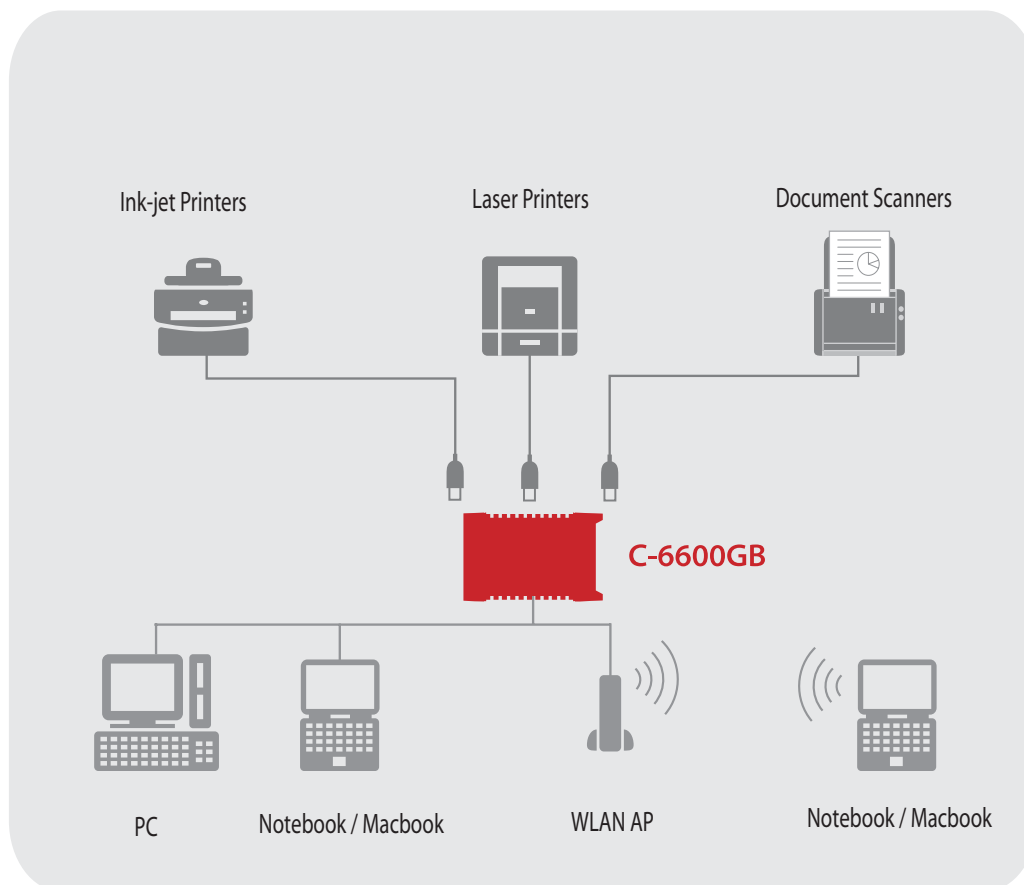


# Hi-Speed Gigabit Print- and Scan Server for Canon **C-6600GB**



Ideal for	Canon PIXMA Ink-jet	Canon imageCLASS CAPT Laser Printers	Canon PIXMA Multi-Function Printers	Canon DR-series Document Scanners
-----------	---------------------	--------------------------------------	-------------------------------------	-----------------------------------

## Ideal solution to share Canon printers + scanners over Gigabit-Ethernet



The C-6600 GB provides convenience and flexibility to share your Canon Multi-function-printers and document scanners over Gigabit Ethernet

Like the rest of silex's C-series products, the C-6600GB is developed in close association with Canon.

Enjoy all functions of your Canon printers and Canon scanners over the network - as if they were locally connected.

### Key features

- ⦿ Printing, scanning, memory card storing and PC fax over LAN with Gigabit speed.
- ⦿ Compatible with most Canon Multi-Function-printers and document scanners.
- ⦿ Canon printer status monitoring support.
- ⦿ Support for scan button manager "CaptureOnTouch".

- Bi-directional communication with printers
- MFP/AIO-Server
- Printserver
- Scanserver
- Storage-server
- Multi-language Support
- USB 2.0 Hi-Speed
- IP Filtering Enhanced Security
- 1 USB-Port
- Canon-Status Monitor
- 1000/10/100/1000 Mbit
- IPP Internet Printing Protocol

# Share your Canon printer and scanner over Gigabit Ethernet

## Features

### Up-to-date Gigabit technology

The C-6600GB has a Gigabit Ethernet interface. The device also supports the 10 and 100 Mbit standard.

### Convert your Canon -MFP and -printer into a network resource

With the C-6600GB a Canon USB-or-Multifunction printer can be shared with colleagues or family members across the home or company network.

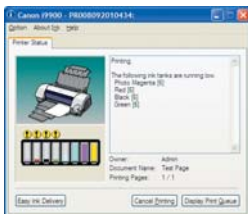
### Network printing, scanning, memory card sharing and PC Fax.

The C-6600GB shares all functions of your Canon devices over the network

### Real-time Canon printer status monitoring support

The convenience of the Canon status monitoring function is available on the network as if it was locally connected to your PC. You can remotely monitor various defined printer operating conditions such as ink levels and paper empty on a real-time basis.

#### PIXMA All-In-One printer



▲ printing

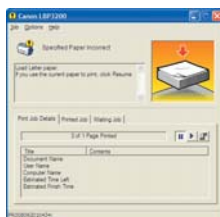
#### CAPT Laser printer



▲ printing



▲ Ink cartridge empty / Paper out



▲ paper out

### With Device Server feature also compatible with Mac OS

To enable you to use your Canon printer, your document Scanner or other USB devices also on Mac OS the C-6600GB has the "device server mode" feature. That means that you can use the device with the software SX-Virtual Link as a Device Server. You can connect to your USB device over the network and use it as if it was locally connected. This feature is of course also available on Windows OS. Configuration of this feature is available via webinterface.

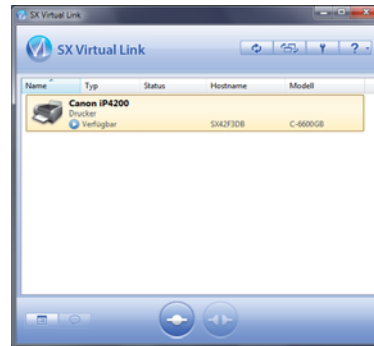
### Maximize productivity of your scanner

With help of the C-6600GB several users can share a high quality Canon document scanner over the network. The C-6600GB also shares a scanner for a virtual machine (VM). The software SX-Virtual Link supports "request of use" of a scanner that is already connected to another user and can disconnect the first user upon request after a time out to make the scanner available for the next user.

## Application Example

### Software SX- Virtual Link

Client software for the virtual USB connection in Device Server mode and for scanners



## Specification

Supported Operating Systems	Windows 7, Vista, XP, Server 2003 and 2008 (32/64 Bit); Mac OS X v10.3-10.6
Supported Protocols	TCP/IP
Configuration	Quick Setup, Webbrowser, telnet, AdminManager
Device Interface	1x USB 2.0 Hi-Speed (A-Type)
Network Interfaces	10/100/1000 Mbps (auto-detection)
Current to USB connection	up to 2000 mA
Power Supply	12V, universal AC adapter (AC 100-240 V)
Power Consumption	3W + USB-power
Languages (setup program)	German, English, French, Spanish, Italian, Portuguese, Chinese, Japanese
Guarantee	2 years
Approvals	FCC, CE, VCCI Klasse B
Package contents	C-6600GB, setup guide, AC adapter, warranty booklet, CD-ROM, manual
Dimensions	60 x 100 x 28mm
Weight	100g

## Software

CX-User Software	Wizard style quick setup utility
CXPrint	Client Software for Windows Printing
SX Virtual Link	For networking USB devices



ISO 9001  
silex technology, Inc.



ISO 14001  
silex technology, Inc.  
Design & Manufacture Center

Canon® is a registered trademark of Canon Inc. silex technology is a registered trademark of silex technology, Inc. Other company or product names may be trademarks or registered trademarks of their respective owners. Technical information and specifications are subject to change without notice. ©2010 silex technology europe GmbH. All rights reserved.

## Global offices:



**Europe**  
silex technology europe GmbH  
+49-2151-650090  
Toll-free Hotline in Germany:  
0800-7453938  
www.silexeurope.com  
contact@silexeurope.com

**Japan**  
silex technology, Inc.  
+81-774-98-3782  
www.silex.jp  
contact@silex.jp

**USA**  
silex technology america, Inc.  
+1-801-748-1199  
Toll-free Hotline in the USA:  
866-765-8761  
www.silexamerica.com  
contact@silexamerica.com

**China**  
silex technology beijing, Inc.  
+86-10-6440-3958  
www.silex.com.cn  
contact@silex.com.cn